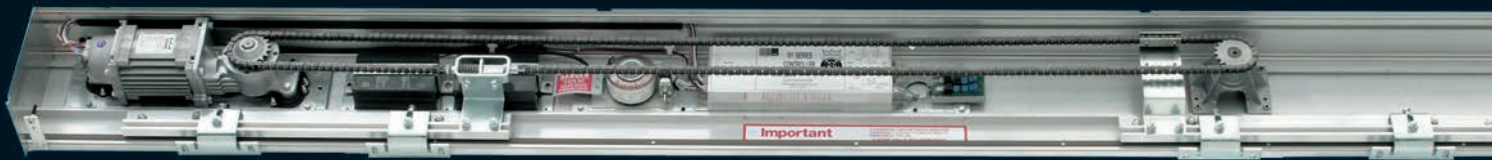


01 Series

Automatic Sliding Doors

For Versatile
Door Solutions





the ultimate automatic operator

For over four decades DORMA Automatics has been manufacturing and supplying the highest quality automatic door operators throughout Australia, South East Asia and the Middle East.

Using next generation technology, the O1 Series of automatic sliding door operators can move up to 1,000kg doors with infinite control.

DORMA's tradition of reliability, longevity, performance and safety continues to influence its' product development.

The O1 Series of operators are Australian made product developed specifically to reliably operate oversized doors in a range of applications.

This impressive automatic sliding door operator can be tailor-made to suit various

door types including solid lead, bullet resistant and heavy industrial doors.

The O1 Series are powered by a high torque, superior performance motor, developed to withstand heavy duty use.

To ensure high reliability, the O1 Series drive train consists of a 12.7mm pitch chain that has an average tensile strength of 1950kg.

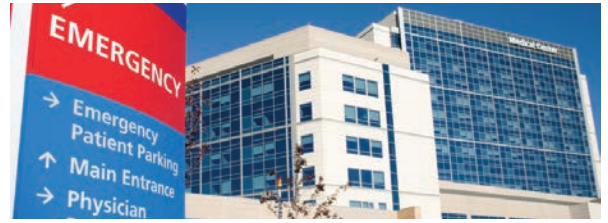
The locking system incorporates a fully monitored battery reserve system to ensure the doors remain locked during a power failure.

**Heavy duty
robustness**

**Securing your
entry**



Hospitals / Healthcare



Financial Institutes



Shopping Centres



Airports & Transport Hubs



Law Enforcement Buildings



Hotels / Convention Centres



Government Buildings



Correctional Facilities

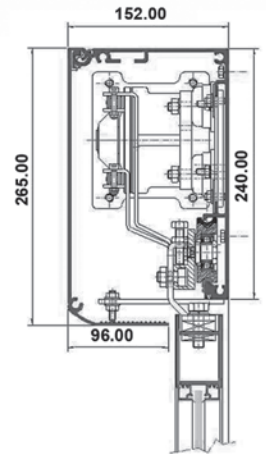


01 Series Operator Models



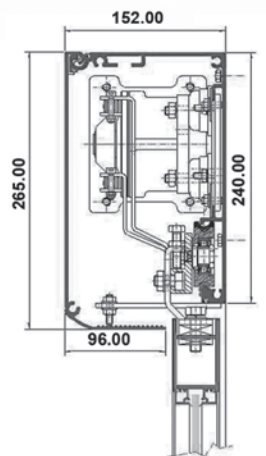
EL301

- Powerful 24VAC high torque motor capable of operating a maximum total door weight capacity of 300kg
- Designed to suit aluminium framed, 12 / 15 / 19 mm thick frameless glass, solid core timber or custom type doors.
- Robust and reliable chain drive power train with a tensile strength of up to 1950kg.
- UPS feature built in providing up to 300 continuous open / close cycles during a power failure.



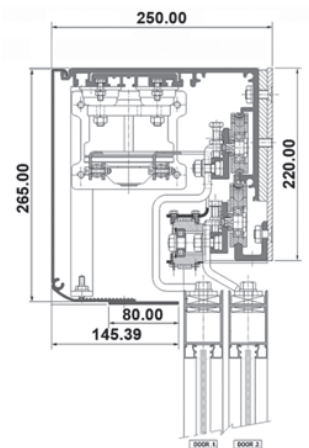
EL301 Secure

- As per EL301
- Fully integrated electronic lock system
- Solid tamper resistant housing
- Security program functions include: lock, smart lock, partial open lock and emergency lock
- Up to 48 hours of continuous lock time during a power failure with an option to extend
- Door leaves can be locked in any position
- BMS interface including open, closed, power, battery, fire monitoring
- Fully monitored battery back up system with audible alarm
- Endorsed for high security in government buildings



EL301 Telescopic - Framed Door

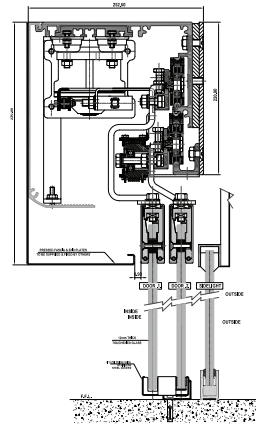
- As per EL301
- Greater flexibility when a wider clear opening is required but the available space is limited.
- Available for use in both bi-parting (4 door leaves) and single sliding (2 door leaves in one direction) applications.





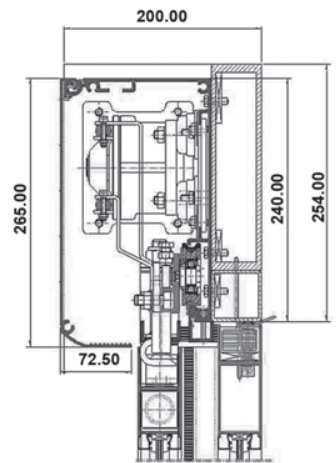
EL301 Telescopic - Frameless Glass Door

- As per EL301
- Frameless glass doors provide a clear view and when in the fully open position door leaves sit flush with the fixed panel.
- Greater flexibility when a wider clear opening is required but the available space is limited.
- Available for use in both bi-parting (4 door leaves) and single sliding (2 door leaves in one direction) applications.



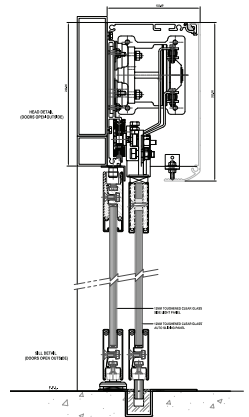
EL301 Breakout - Framed Door

- As per EL301
- Sliding door operator with emergency breakout capability
- Standard door weight 240kg



EL301 Breakout - Frameless Glass Door

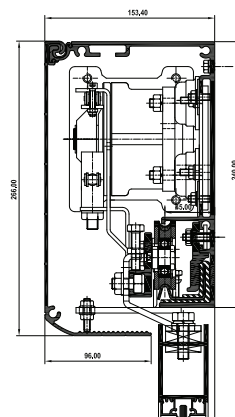
- As per EL301
- Frameless sliding door operator with emergency breakout capability
- Standard door weight 200kg





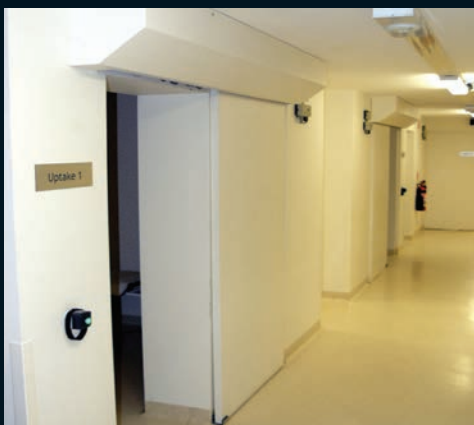
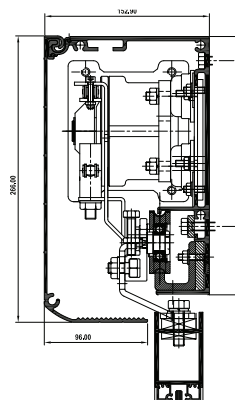
AL401

- Powerful 24 VAC high torque motor
- Door weight capacity 400kg
- Stainless steel track system
- Designed to suit aluminium framed 12mm, 15mm, 19mm thick frameless glass, solid core timber or custom type doors



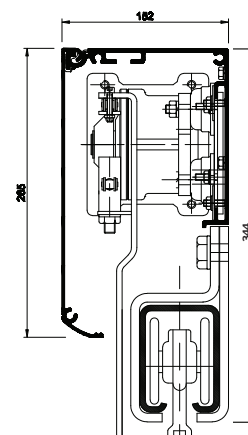
AL501

- Powerful 24 VAC high torque motor, coupled with 12:1 ratio gearbox
- Door weight capacity 500kg
- Solid aluminium J-track system
- Designed to suit aluminium framed 12mm, 15mm, 19mm thick frameless glass, solid core timber or custom type doors



AL1001

- Powerful 24 VAC high torque motor, coupled with 12:1 ratio gearbox
- Door weight capacity 1000kg
- Solid steel track system ensures smooth operation and long term reliability
- To suit door widths up to 2000mm



01 Series Performance Table

Door Parameters	EL301	AL401	AL501	AL1001
Single panel sliding door – Maximum Door width – Maximum Door weight	3000mm 300kg	3000mm 400kg	3000mm 500kg	2000mm 1000kg
Double leaf sliding door – Maximum Door width – Maximum Door weight	1500mm* 150kg	2000mm* 200kg	2000mm* 250kg	2000mm 500kg
Technical Data				
Height (Cowl)	240mm	240mm	240mm	240mm
Depth	152mm	152mm	152mm	152mm
Track Type	Aluminium	Stainless Steel	Solid Aluminium	Solid Steel
Motor Type				
High Torque Purpose designed 24 VAC	•	•	•	•
Gearbox				
Purpose designed fully enclosed with steel cut gears	•	•	•	•
Drive Train				
Chain	•	•	•	•
Belt	°	N/A	N/A	N/A
Opening speed (Fully adjustable)	10 – 50cm/sec	10 – 50cm/sec	10 – 30cm/sec	10 – 30cm/sec
Closing speed (Fully adjustable)	10 – 40cm/sec	10 – 40cm/sec	10 – 30cm/sec	10 – 30cm/sec
Hold open time (independent for Lock and Auto mode)	0 – 60 sec	0 – 60 sec	0 – 60 sec	0 – 60 sec
Power Supply	240 V, 50/60Hz	240 V, 50/60Hz	240 V, 50/60Hz	240 V, 50/60Hz
Power Consumption	175W	175W	175W	175W
Ambient Temperature	-15°C - 50°C	-15°C - 50°C	-15°C - 50°C	-15°C - 50°C
Class of protection (IP Rating)	IP20	IP20	IP20	IP20
Control Module				
Microprocessor control	•	•	•	•
Function Modes – Off/Lock – Exit – Automatic – Open	• • • •	• • • •	• • • •	• • • •
Electronic Mode Pad	°	°	°	°
Security Interface	°	°	°	°
After Hours Exit (Night bank)	•	•	•	•
Self Learning	•	•	•	•
Automatic reverse	•	•	•	•
Photo electric cells (safety beams)	•	•	•	•
Failsafe Opening	•	•	•	•
Continuous operation under power failure	°	°	°	°
12 Volt output	•	•	•	•
Door Management System (DMS)	°	°	°	°
Locking				
Electric Motor lock	°	°	°	°
Interface lock inputs when lock option is selected	•	•	•	•
Standard • Optional °				

* Larger door sizes upon application

engineered for security



Motor Lock

When the motor lock function is selected the door will fully close and lock at normal operating speed when all the safety devices are clear. If the door is obstructed while closing it will auto reverse to the fully open position, dwell time out, close and lock.

Smart Lock

When smart lock is selected the door will close and lock at normal speed overriding all safety devices. If the door is obstructed during the closing cycle it will immediately lock in position for a preset time before closing and re-locking.

Emergency Lock

When the emergency lock function is selected the door will close and lock at its maximum operating speed, overriding all the safety devices. If the door is obstructed during the closing cycle it will immediately lock in this position for a preset time before unlocking and fully closing and re-locking.

Partial Open Lock

When the partial open lock function is selected the door will open to a preset distance and lock in this position. A secure transaction can be achieved and when completed the door will fully close and re-lock.

Direct drive gearbox incorporating high tensile steel cut gears

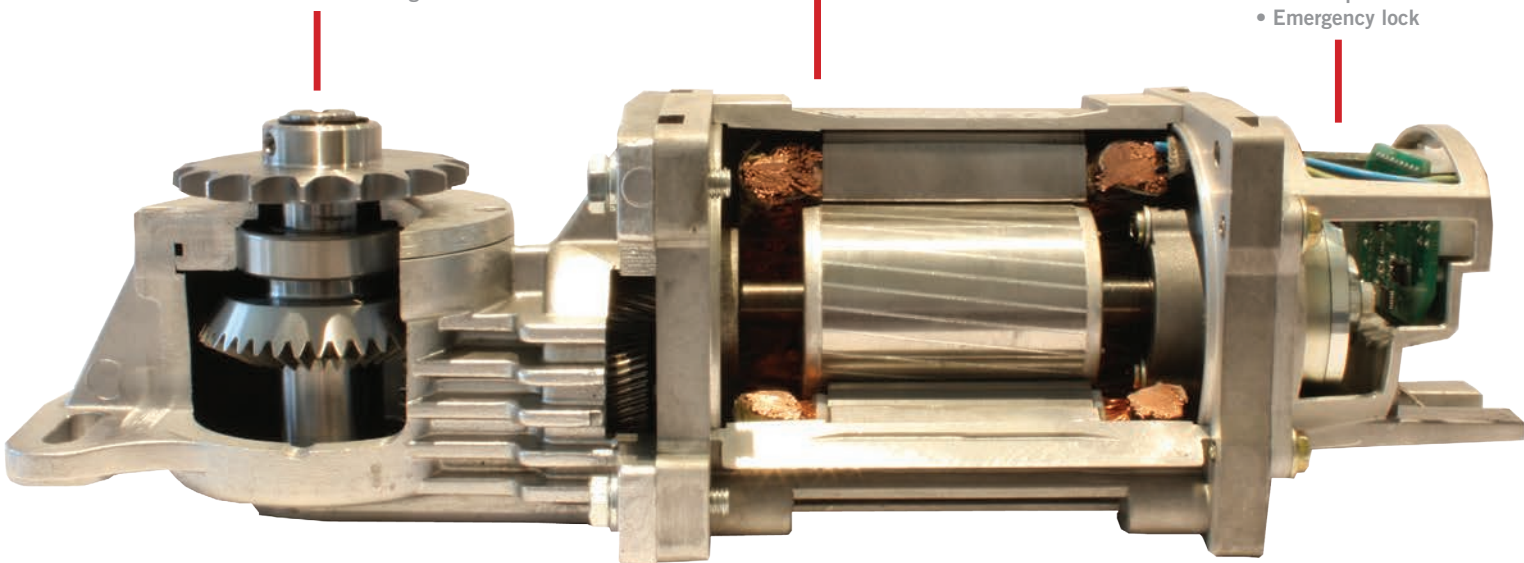
- Fully enclosed 8:1 gear ratio
- Chain drive with 1950kg tensile strength
- Hardened steel gear shaft
- Sealed for life bearings

24V three phase high torque motor capable of moving up to 300 kg

- Purpose designed
- Solid construction
- Maintenance free

Fully integrated, tamper resistant electric lock enabling the door to be locked in any position

- Motor lock
- Smart lock
- Partial open lock
- Emergency lock



Heavy Duty Purpose Designed and Built Motor and Electric Motor Lock

The O1 Series utilizes a purpose designed 3 Phase 24V AC motor and a fully enclosed secure motor lock that is totally resistant to vandalism and the effects of extreme weather conditions. The robust AC drive

system will offer the following benefits:-

- Doors can be locked in any position, through the electric lock engagement.
- High speed emergency lock option.
- Fully enclosed lock and digital encoder.
- Partial Open Lock - a reduced opening distance that allows secure transactions.
- Constant power at all

times during heavy traffic flows – performance guaranteed.

- Engineered to operate door weights in excess of 300kgs.



building management

DORMA Door Management System (DMS)

The DORMA Door Management System (DMS) allows the O1 Series to integrate with a building's Local Area Network (LAN) and Building Management System (BMS).

The DMS easily connects via a standard RJ45 connector providing simple control of all automatic door operators within the building.

The DMS is designed to accommodate buildings with one or more entrances, allowing you to control and monitor the following parameters:

Operating Parameters:

- Selectable lock/ auto/ exit/ open
- Partial open lock control
- Emergency lock control
- Time clock settings
- Three partial open distances

Monitoring Parameters:

- Door open, closed, locked
- Service messages including a time and date stamp
- 240V mains power
- Battery condition
- Motion sensors
- People / operation count

DMS Advantages:

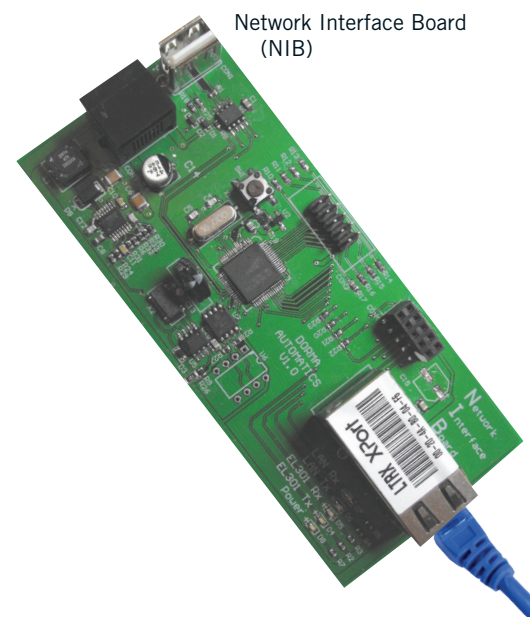
- Remote control operation from a stand alone PC or integrated into a BMS.
- Monitor door operation.
- Control door functions.
- Provide real time diagnostic feedback.
- Automated diagnostic report sent via email
- Service log download
- Improved security monitoring
- Mode control via built in time clock function (day, week and year settings)

All types of automatic doors including sliding, swing, telescopic, breakout, folding etc, can be interfaced with the DORMA Door Management System (DMS).*

The DMS can also be connected to older door operators and door operators from other manufacturers.*

** This interface function is restricted to operator mode only.*

Network Interface Board (NIB)





01 Series General Specification



The Automatic Door Operator

The automatic single / bi-parting door operator is to be a 240v fully electric DORMA EL301 Series, fully housed in extruded aluminium (265 mm H x 152 mm W). The operator must be capable of operating a total door weight up to 300 kg and include a monitored battery back up system with audible alarm that is able to operate the door up to 300 cycles during a power failure. The operator is to comply with the Australian Standard AS5007 and the Building Code of Australia.

The equipment will incorporate the following:

A 3 phase 24 volt motor that is unable to be burnt out; a programmable logic control with current sensing and durable solid state switching of the motor; chain drive with average tensile strength of 1950kg and a 12.7mm pitch; self-lubricating gearbox with steel cut gears (not nylon or cast) for increased durability with no intermediate belts or pulleys; an anodised aluminium replaceable tracking system; and a carriage assembly supported by glass fiber reinforced nylon track wheels with fully raced and sealed ball bearings.

The operator must have positive electric braking to close the doors smoothly; fully adjustable speed control with independent settings for open, close and braking; automatic re-closing circuitry to ensure doors re-close if partially opened; intermediate selectable opening widths or climate control facility.

The operator is to incorporate a failsafe device to open doors fully on power failure or on fire signal in accordance with the BCA section D2.19 and relevant Australian Standards; monitoring warning signal to indicate when the battery power is low; automatic reversing if obstructed during closing sequence with fully adjustable sensitivity settings; automatic stop and retry if obstructed during opening sequence at a predetermined programmable time and speed; dual sets of jamb fitting high gain (up to 15m) flush mounted safety beams (PE cells) that are resistant to sunlight.

Actuation

The operator is to be actuated by two DORMA microwave movement sensors as standard equipment; the sensors must be resistant against reflected sun light and have focusable area detection settings to reduce unnecessary actuations. The operator is to be covered by a one year parts warranty from date of invoice.

Optional Features

Belt Drive

15mm belt with curvilinear tooth design precisely formed and accurately spaced to ensure smooth engagement with pulley grooves.

Interface

Provides operational data output signals for building security system, i.e. open, closed, locked

Motor Lock

The operator is to have a CSIRO approved failsafe electric motor lock, compliant with the BCA section D2.21, which locks the doors via the drive train regardless of the door position. It is to incorporate a rechargeable battery reserve to ensure the doors remain locked for up to 30 hours under mains power failure with an option to extend.

Mode Pad

The operator is to be fitted with a DORMA one touch operation electronic mode pad with back lit LCD screen. The mode pad is to have an input jack for the operator programming device and integrated diagnostic feedback function that provides information on door function status and servicing requirements.



Specific Operator Specifications

EL301 Secure

The Automatic Door Operator:

The automatic single / bi-parting door operator is to be a 240v fully electric DORMA EL301 Secure Series. Fully housed in extruded aluminium, the operator is to include a tamper resist-

ant electric lock capable of locking the door leaves in any position. The operator must include a monitored battery back up system with audible alarm and be able to provide up to 48 hours of lock

function during a power failure. The operator is to comply with the Australian Standard AS5007 and the Building Code of Australia.

EL301 Telescopic - Framed Door

The Automatic Door Operator:

The automatic single / bi-parting, bi-sliding door operator is to be a 240v fully electric DORMA EL301 Telescopic Series, fully housed in extruded aluminium (265 mm H x 250 mm W). The operator

must be capable of operating a total door weight up to 300 kg and include a monitored battery back up system with audible alarm that is able to operate the door up to 300 cycles during a power

failure. The operator is to comply with the Australian Standard AS5007 and the Building Code of Australia.

EL301 Telescopic - Frameless Glass Door

The Automatic Door Operator:

The automatic single / bi-parting, bi-sliding frameless door operator is to be a 240v fully electric DORMA EL301 Telescopic Frameless Series, fully housed in extruded aluminium (265 mm

H x 250 mm W). The operator must be capable of operating a total door weight up to 300 kg and include a monitored battery back up system with audible alarm that is able to operate the door up

to 300 cycles during a power failure. The operator is to comply with the Australian Standard AS5007 and the Building Code of Australia.

EL301 Breakout - Framed Door

The Automatic Door Operator:

The automatic single / bi-parting, door operator is to be a 240v fully electric DORMA EL301 Framed Breakout Series, fully housed in extruded aluminium (265 mm H x 152 mm W). The operator must be capable of operating a total door

weight up to 240kg and in emergency be able to opened fully including the sidelights by applying an outward pressure. It is to include a monitored battery back up system with audible alarm that is able to operate the door up to

300 cycles during a power failure. The operator is to comply with the Australian Standard AS5007 and the Building Code of Australia.



Specific Operator Specifications

EL301 Breakout - Frameless Glass Door

The Automatic Door Operator:

The automatic single / bi-parting, door operator is to be a 240v fully electric DORMA EL301 Frameless Breakout Series, fully housed in extruded aluminium (265 mm H x 152 mm W). The operator must be capable of operating a total door

weight up to 200 kg and in emergency be able to opened fully including the sidelights by applying an outward pressure. It is to include a monitored battery back up system with audible alarm that is able to operate the door up to

300 cycles during a power failure. The operator is to comply with the Australian Standard AS5007 and the Building Code of Australia.

AL401

The Automatic Door Operator:

The automatic single / bi-parting door operator is to be a 240v fully electric DORMA AL401 Series, fully housed in extruded aluminium (265mmH x 152mmW) including a stainless steel

track system. The operator must be capable of operating a total door weight up to 400 kg and include a monitored battery back up system with audible alarm that is able to operate the door up

to 300 cycles during a power failure. The operator is to comply with the Australian Standard AS5007 and the Building Code of Australia.

AL501

The Automatic Door Operator:

The automatic single / bi-parting door operator is to be a 240v fully electric DORMA AL501 Series, fully housed in extruded aluminium (265mmH x 152mmW) including a solid aluminium

track system. The operator must be capable of operating a total door weight up to 500 kg and include a monitored battery back up system with audible alarm that is able to operate the door up

to 100 cycles during a power failure. The operator is to comply with the Australian Standard AS5007 and the Building Code of Australia.

AL1001

The Automatic Door Operator:

The automatic single / bi-parting door operator is to be a 240v fully electric DORMA AL1001 Series, fully housed in extruded aluminium (265mmH x 152mmW) including a solid steel track

system. The operator must be capable of operating a total door weight up to 1000 kg and include a monitored battery back up system with audible alarm that is able to operate the door up to

100 cycles during a power failure. The operator is to comply with the Australian Standard AS5007 and the Building Code of Australia.

Special Features - Enhanced Options

Activ8.1 On <ul style="list-style-type: none"> – Dual motion and monitored presence sensor – Presence Safety Curtain 2m wide x 350mm deep – Motion detection field 4m wide x 2m deep – Max. height 3m 	 <p>55 x 260mm</p>	OPO-1 Soffit Sensor Ceiling mounted Passive Infrared Sensor. <ul style="list-style-type: none"> – Max. height 5m ■ Min. field 1.7m X 2.3m at max. height ■ Max. field 3.2m X 2.3m at max. height 	 <p>Diameter: 165mm</p>
Microhead Sensor STD Compact microwave sensor for general application. <ul style="list-style-type: none"> Max. height = 3m Min. field = 0.5 x 0.5m Max. field = 4 x 2.5m - Flexible mounting options - Adjustable field size 	 <p>60 x 80mm</p>	Touchless Switch Options CleanScan or Magic Switch Touchless Door Operation Switches. <ul style="list-style-type: none"> – Hospitals. – Cleanrooms. – Food preparation. – Hygienic Activation. 	 <p>85 x 85mm</p>
Options Board & Output Relay Board <ul style="list-style-type: none"> – Flexible interface between door operator and security. – Can accept NO/NC inputs. <ul style="list-style-type: none"> – Security Lock/Open. – Climate. – Can provide NO/NC or Voltage outputs. <ul style="list-style-type: none"> – Door Locked/Open Status. – Battery/Mains power status. 		DMS <ul style="list-style-type: none"> – Provides full remote control operation / monitoring – Includes a 365 day time clock – Real time diagnostic feedback with email notification 	
Customer Mode Pad <ul style="list-style-type: none"> – Simple one-touch operation. – Selectable customer warning alarms. – Adjustable climate control. – People counting function. – Diagnostic feedback. 	 <p>100 x 43mm</p>	People Counting Kit <ul style="list-style-type: none"> – Accurate directional people counter. – Ideal for Shopping Centres, Supermarkets, Retail outlets etc. – Can be interfaced with Customer Mode Pad. 	
SK Series Key Switches <ul style="list-style-type: none"> – Solid construction with stainless steel finish. – Security concealed fixing points & suitable for most master key systems. – SK2 – Spring return switch. – SK4 – Four position switch. 	 <p>65 x 37mm</p>	P2 Push Button <ul style="list-style-type: none"> – Mushroom head push button. – Suitable for after hours egress and emergency exit. – Compliant with AS 1428. 	 <p>Diameter: 45mm Plate: 115 x 40mm</p>
K3 & K4 Key Switches <ul style="list-style-type: none"> – K3 Off/Auto/Open. – K4 Lock/Exit/Auto/Open. 	 <p>115 x 40mm</p>	Nylon Floor Guide Versatile for 12 – 19mm Glass Doors.	



DORMA Service opening doors to the future

“servicing is an investment, not a cost”

When you choose DORMA, you are supported by a nationwide network of accredited and fully trained, specialist automatic door technicians and agents, 24 hours a day, 7 days a week.

Our specialised service covers DORMA's comprehensive range of automatic door operators.

When you call DORMA Service

you will speak to someone who knows the products and who can offer expert advice. Public safety and security are our paramount concern and this is reflected in our prompt response times - making DORMA the unrivalled industry leader in service support.

Why the necessity?

Door operators are complex pieces of equipment that are subject to punishing wear and tear. A regular maintenance program ensures that wearing components are replaced or a malfunction is addressed before it becomes a problem.

Regular maintenance helps prevent accidents, prolongs the life of the product and ensures the safety of users while reducing breakdowns and the accompanying inconvenience.

Prevention is better than cure

Well-maintained DORMA products can provide safe and efficient use for over 20 years and are vital to the smooth operation of any business. Consider the risks of inefficiently operating doors – reduced

security, increased downtime, productivity loss, customer complaints, acoustic reduction, soaring air-conditioning and heating costs...

pleasure in the job
puts perfection in the work



The DORMA Service Experience

National Service Network

With over 40 years experience in the service industry, DORMA is committed to ongoing specialist training for our technicians and service agents.

DORMA employs over 100 service technicians throughout the Middle East region, and is supported by an accredited service agent network. This ensures total coverage and expertise across an extensive product portfolio.

Being close to our customers and understanding each individual situation is imperative to our business success. With a dedicated in-house training program, full coverage and efficient response times it is hard to go past DORMA Service.

Corporate Accounts

DORMA's Corporate customers are managed by a single point of contact ensuring that all site locations receive the same high level of service and consistency.

This partnership enables DORMA to tailor a service and maintenance agreement to cover all brands of automatic doors, door closers, industrial doors and operable walls on the premises.

This service commitment ensures the ongoing easy and safe flow of people and goods throughout all customer site locations.

Complete Service Solution

Your Corporate Account Partner

will customise a fully integrated and value-added one-stop-shop service.

This dedicated service solution will cover all new equipment upgrades and maintenance and repairs to existing door and operable wall systems.

Customers with multiple sites and extensive equipment portfolios will benefit greatly in time and management expense by dealing with a sole supplier who is familiar with all site requirements.





DORMA Gulf Door Controls FZE

P.O.Box 17268,
Jebel Ali Free Zone South
Dubai, United Arab Emirates
Tel. +971 4 8020 400
Fax. +971 4 8869 100
info@dormagulf.com

DORMA Middle East LLC

P.O.Box 121732
Dubai, United Arab Emirates
Tel. +971 4 3477789
Fax. +971 4 3409929

DORMA Kuwait

AL- RAI Industrial Area
Main Street – Block 1490.
Kuwait
Tel. +965 24716584
Fax.+965 24756843

DORMA Qatar

Emadi Business Center
Office #16,
C Ring Road, Doha
Tel. +974 4 4517372

**DORMA ARABIA Automatic
Doors Ltd.**

7048 At Taawn, Unit No. 1
Al Khobar 34632 – 3404
SAUDI ARABIA

Tel. +966 3 864 8261
+966 3 864 8097
Fax. +966 3 864 8097

Riyadh:

Tel. +966 1 464 5765
+966 1 464 9586
Fax. +966 1 464 3025

Jeddah:

Tel. +966 2 606 8155
+966 2 606 8166
Fax. +966 2 606 8122

**DORMA Architectural
Hardware**

DORMA Drive, Drawer AC
Reamstown, PA 17567
USA

DORMA GmbH + Co. KG

DORMA Platz 1
D - 58256 Ennepetal,
Germany
Tel. +49 2333 793-0
Fax. +49 2333 793-495

www.dorma-gulf.com

